



MERMAID GROUPTM

for the nation...



Table of Contents



Executive Summary	03
Vision & Mission	04
About Mermaid Group	05
Meet Our Leaders	08
Mermaid Green City	09
Location Map & Layout	11
Green City Prize List	13
Legend & Amenities	14
Services & Expertise	15
Portfolio Showcase	17
Contact Information	18



EXECUTIVE SUMMARY.

Mermaid Group stands as a pioneering force in the real estate sector, redefining modern urban living with innovative, eco-conscious projects. Founded on a vision of creating sustainable and future-ready communities, the company has consistently delivered exceptional value to its stakeholders through strategic planning and execution.





OUR VISION AND MISSION.



Core Mission:

To build sustainable urban communities that enhance quality of life while preserving environmental integrity.



Vision Statement:

To become the most trusted and innovative real estate brand, shaping the future of urban living with projects that blend luxury, sustainability, and smart living solutions.

Unique Approach:

At Mermaid Group, we combine cutting-edge technology, eco-friendly practices, and a customer-centric approach to deliver real estate solutions tailored to meet the diverse needs of modern lifestyles. Our commitment to green urban planning and smart living sets us apart, ensuring that each project aligns with global sustainability standards while catering to the aspirations of our clients.



About *US.*

Mermaid Group was established in September 2021, with a vision to revolutionize the real estate industry through innovative, sustainable, and customer-centric projects. From humble beginnings, the company has evolved into a trusted name in real estate, renowned for its commitment to quality, transparency, and forward-thinking solutions.



Our Journey in Real Estate:

Over the years, Mermaid Group has steadily grown by embracing innovation and adapting to the changing needs of modern urban lifestyles. With a strong focus on green urban planning and sustainable living, the company has successfully executed several landmark projects that have redefined community living in Bangladesh.





Milestones and Achievements.

KALIGANJ MERMAID COMMERCIAL CITY

Commercial City launch in
August 2022

PURBACHOL MERMAID GREEN CITY

Green City launch in
September 2021.



- Plot sales exceed 1,500⁺.
- 1200⁺ Existent Clients.
- 300⁺ bigha registration provided.

- Purchase completed: 45% bigha.
- Total Project Value: 10 Billion.



Values and Commitment to Sustainability.

At Mermaid Group, our core values of **integrity**, **innovation**, and **sustainability** guide every aspect of our operations. We are committed to:



Designing eco-friendly communities that harmonize with nature.

Implementing energy-efficient technologies and green building practices.

Promoting a sustainable lifestyle for our clients and future generations.



Meet Our Leaders.



M.A.S. Ruhel
Chairman

Mr. MAS Ruhel is the visionary Chairman of Mermaid Group, overseeing a diverse portfolio including hotels (Pritom Inn, Sky View) and real estate, driving the brand's sustained growth and global expansion.



Md. Nurul Huda
Managing Director

Md. Nurul Huda is the Managing Director of Marmaid Group. He also owns Nokshikola Group, which focuses on property development. His expertise in property and hospitality drives Marmaid's operations and expansion.



Rakibul Hasan
Deputy Managing Director

Mr. Rakibul Hasan is the Deputy Managing Director. He also owns Marmaid Fisheries, Dairy, and Agro, overseeing high-quality production. His diverse expertise strengthens the group's operational excellence and sustainability.



KHANDKER RAZWEN HAMID
Finance Director

A management graduate from London and ACCA part-qualified, experienced with RDRS Bangladesh and managing a knitting factory, skilled in finance and operations with strong adaptability and leadership abilities.



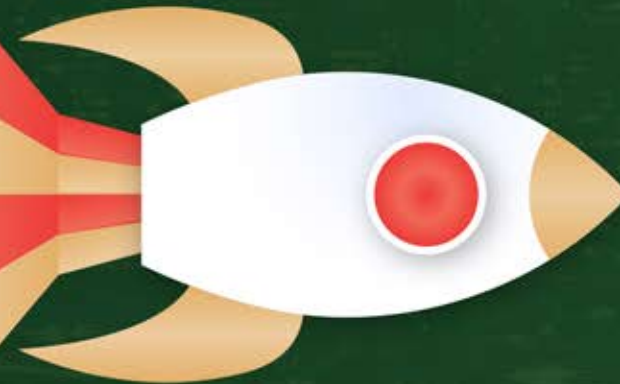
Our Services

SERVICE 01

SERVICE 02

SERVICE 03

SERVICE 04



Property Development:

From conceptualization to execution, we specialize in creating high-quality residential, commercial, and mixed-use properties that reflect innovation and excellence.

Urban Planning:

Our team delivers cutting-edge urban planning solutions, ensuring seamless integration of infrastructure, functionality, and aesthetics in every project.

Real Estate Consulting:

We provide expert advice and strategies to help clients navigate the complexities of the real estate market, optimize investments, and achieve their goals.

Sustainable Solutions:

Delivering eco-friendly designs and green infrastructure for sustainable urban development.



Our Expertise



▶ Designs that reduce energy consumption and promote sustainability.

▶ Construction using eco-friendly and sustainable resources.

▶ Innovative systems for efficient water use and waste reduction.

▶ Designs that blend seamlessly with the natural environment.

Sustainable and Eco-Friendly Designs:

At Mermaid Group, we prioritize sustainability in every project. Our team is dedicated to creating eco-friendly designs that not only minimize environmental impact but also enhance the quality of life for communities.



Block	20 Katha	10 Katha	5 Katha	4 Katha	3 Katha	2.5 Katha
Block A			172	113	383	438
Block B			457		700	
Block C			212	215	752	
Block D			508	368	457	390
Block - VIP			294			
Avenue			359			
Commercial	12	112	40			
Sub-Total	12	112	2042	696	2292	828
IN TOTAL	5982					

LEGEND

- 2.5 Katha (36'x50')
- 03 Katha (36'x60')
- 04 Katha (44'x65')
- 05 Katha (50'x72')
- 10 Katha (72'x100')
- 20 Katha (100'x144')
- Reserved

AMENITIES

At Mermaid Green City, we offer modern, eco-friendly homes with thoughtfully designed amenities that enhance daily living. Our recreational spaces, fitness centers, and green landscapes promote wellness and community engagement. These amenities provide convenience, save time, and create a vibrant, family-friendly environment. With sustainable practices and smart living features, we ensure a lifestyle that combines comfort, health, and long-term value for our customers.

- Club House
- Green Area
- Shopping Mall
- Play Ground
- Park
- Convention Hall
- Kacha Bazar
- Graveyard
- Clinic
- Police Station
- Water Treatment Plant
- Power House
- Park
- Hospital/ Medical College
- School & College
- University
- Pump House
- Fire Station
- Gymnasium
- Post Office
- Food Court
- Mosque



Mermaid Green City LAYOUT PLAN





Mermaid Green City Location Map

Location & Communication

Located next to Rajuk's planned city of Purbachal, the "Mermaid Green City" project is situated on a 180-foot road alongside Purbachal Sector 28 and the Asian Highway. From Kuril Bishwa Road, it takes approximately 25 minutes, 30 minutes from Hazrat Shahjalal International Airport, 10 minutes from Tongi Bazaar, 15 minutes from Tongi Station, and 10 minutes from Mirer Bazaar. The project is also easily accessible from Gazipur Chowrasta and Bhulta Gauchhia. From the project, any major location in Dhaka city can be reached within 30 minutes of driving.

Nearest Area

Distance & Time

- Uttara - Abdullahpur → 6 km (7 min)
- Shahjalal International Airport → 9 km (10 min)
- Bishwaroad (Main Highway) → 11 km (12 min)
- Kuril Flyover → 16 km (16 min)
- Purbachal American City → 9 km (9 min)
- Rajuk Purbachal 6 No. Sector → 6 km (6 min)
- Upashahar Bridge → 8 km (8 min)
- Birulia Bridge → 8 km (8 min)
- Tongi Bazar → 9 km (9 min)





Mermaid Green City **Project Highlight**

› Type of Project :

A modern mixed-use development, seamlessly combining residential, commercial, and recreational spaces to create a self-sustained eco-friendly community.

› Community Lifestyle :

Offers a sustainable and tranquil environment, with proximity to nature-focused recreational areas, ensuring a balanced and healthy lifestyle for residents and businesses alike.

› Unique Features:

- Plot Size : 2.5/3/4/5/10/20 Katha.
- Location : Located near Rajuk Purbachal 60, 80, 300 feet roads and adjacent to sector 28.
- Project Area : 525 acres (proposed).
- Plot Sizes : 2.5, 3, 5, 7, 10, and 20 katha.
- Road Sizes : 25, 30, 40, 50, 60, 100, and 300 feet wide roads.
- Division of Blocks : The project is divided into several blocks, including residential, commercial, and educational spaces.
- Block Names : Block A, Block B, Block C, Block D, and Block VIP.
- Mouza : Conger Baid, Nondi Bari, Harbaid





Mermaid Green City Location Advantage

> Key benefits of the location:

- Adjacent to Sectors 27 and 28 of Purbachal, located near the 180-foot wide Asian Highway.
- The most modern housing project closest to the capital.
- Dhaka Bypass Expressway Close to the expressway for improved connectivity.
- The location of the project is right next to Ward 46 of Uttar Khan.

> Nearby landmarks and connectivity:

- **Purbachal New Town features iconic tri-towers:** Language Tower (52F), Liberation Tower (71F), and Legacy Tower (111F). These towers offer premium spaces for global corporationsent
- **Asian Highway (180 Feet Road):** A key international roadway ensuring smooth access and connectivity to Purbachal Mermaid Green City.
- **Proposed Purbachal Lake and Eco Park:** A future attraction adding natural beauty and recreational opportunities to the area.

Mermaid Green City



Iconic Tower



Asian Highway






Eco Park






Conatct Information



 **Corporate Office :**
House 99, Level 3 & 4, Road 04,
Block B, Banani, Dhaka 1213

 www.mermaidgroupbd.com  +880 2-48810044  [mermaidgroupbd](https://www.facebook.com/mermaidgroupbd)

 info@mermaidgroupbd.com  [mermaidgroupbd](https://www.instagram.com/mermaidgroupbd)  [mermaidgroupbd](https://www.linkedin.com/company/mermaidgroupbd)

